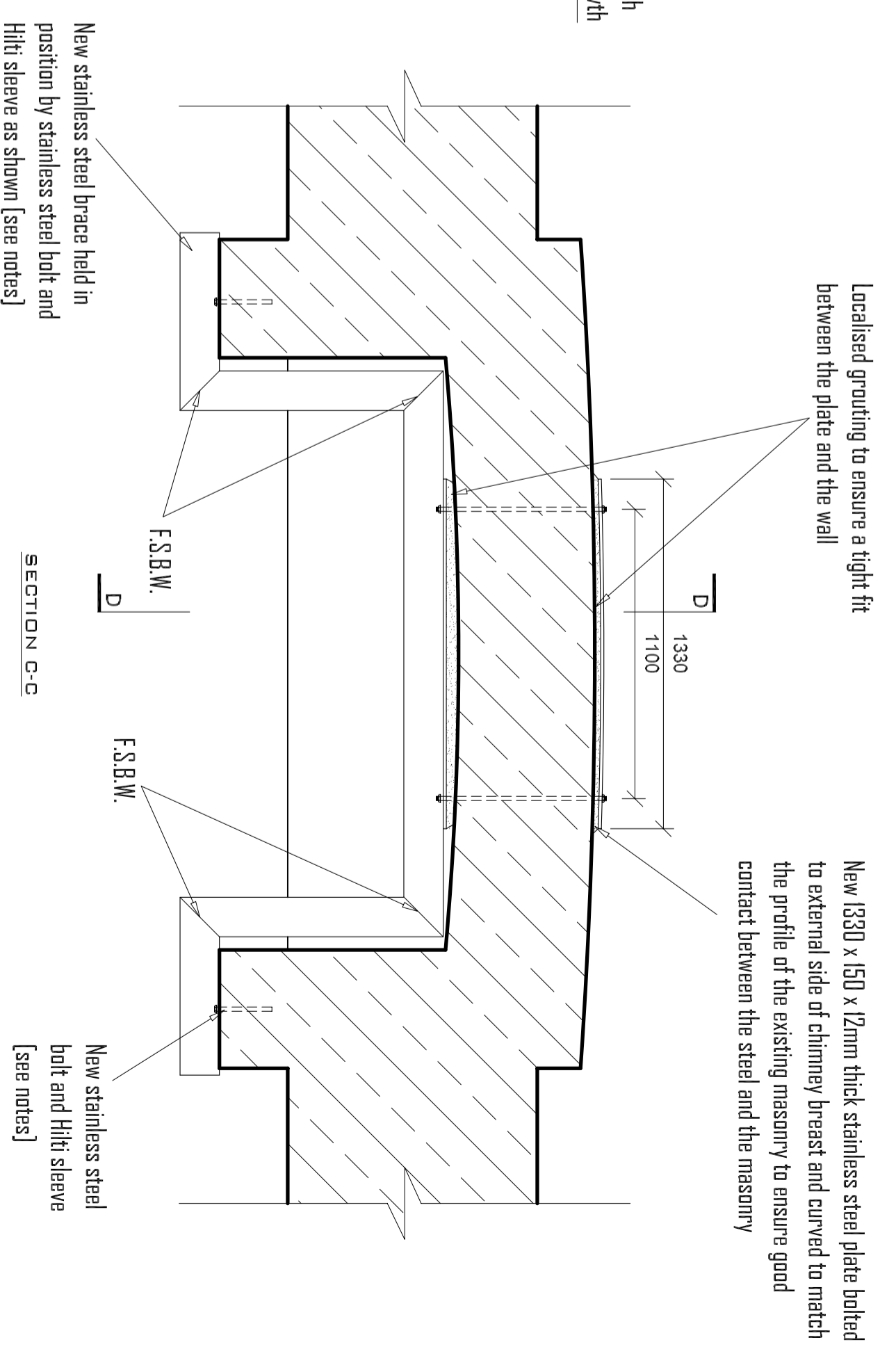


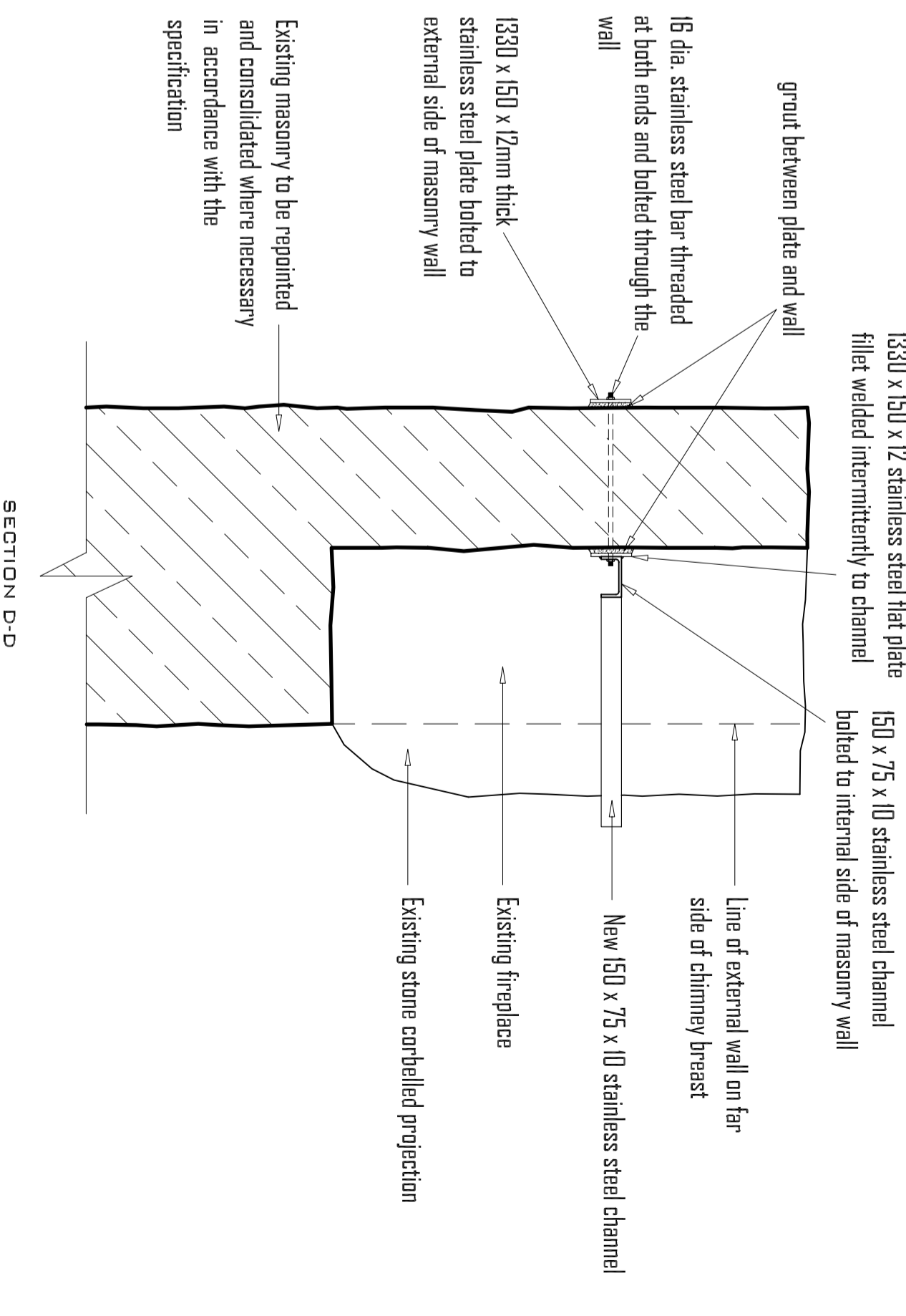
Vertical position of steel brace to be agreed with engineer on site following removal of plant growth



Localised grouting to ensure a tight fit between the plate and the wall

New 1330 x 150 x 12mm thick stainless steel plate bolted to external side of chimney breast and curved to match the profile of the existing masonry to ensure good contact between the steel and the masonry

**Notes**  
 This drawing is to be read in conjunction with all other drawings and the specification.  
 This drawing is diagrammatic only. Individual stones are indicative only.  
 Existing masonry should be consolidated and repaired where necessary in accordance with the specification prior to steel tie installation.  
 Take all necessary site measurements to establish all dimensions necessary to fabricate new steelwork.  
 F.S.B.W. = Full Strength Butt Weld  
 F.W. = Fillet Weld, min 6mm  
 Use 16 dia. stainless steel bolts as per specification. Min depth of embedment = 125mm.



1330 x 150 x 12 stainless steel flat plate fillet welded intermittently to channel

150 x 75 x 10 stainless steel channel bolted to internal side of masonry wall

groat between plate and wall

16 dia. stainless steel bar threaded at both ends and bolted through the wall

1330 x 150 x 12mm thick stainless steel plate bolted to external side of masonry wall

Existing masonry to be repointed and consolidated where necessary in accordance with the specification

Existing fireplace

Existing chimney breast

Line of external wall on far side of chimney breast

New 150 x 75 x 10 stainless steel channel

SECTION D-D

**FOUREM**  
 consulting engineers

22 CONNAUGHT PLACE  
 WELLINGTON ROAD  
 COBK  
 T + 353 (0)74 456323  
 F + 353 (0)74 456323  
 E fourm@eircom.net

DRAWING STATUS: **FOR COSTING**  
 CURRENT REVISION DETAILS:

DRAWN: NC  
 CHECKED: PH  
 SCALE: 1:20@A2  
 DATE: 05.08.2004

PROJECT: OGCROWLEY TOWER HOUSE RUIN  
 DRAWING: REPAIRS TO FIREPLACE

code project no drawing no revision  
 SE 33.01 04 -